

# ASPIRE


art • lifestyle • culture • entertainment

ISSUE 425  
YOUR FREE COPY

  
palmer's  
GARDEN CENTRES OF EXCELLENCE

With over 100 years of experience, Palmer's Garden Centres in Enderby and Ullesthorpe have the solution to solve your home and garden challenges this Christmas, and all year round.

For more information, visit [www.palmersgardencentre.co.uk](http://www.palmersgardencentre.co.uk) or turn to page 3...



View this issue online at [www.aspiremagazinegroup.co.uk](http://www.aspiremagazinegroup.co.uk)

# Best of the rest

The Beatles, fish 'n' chips and red London buses are well-known symbols of modern-day Great Britain. This great nation that we call home once ruled half the world as head of the British Empire, but as time passed and the Empire all but disappeared, being British has become more flexible. There is no way to define 'British-ness', it's just something that is deeply-rooted in each and every one of us; from our genuine belief that taking part is more important than winning and our obsession with beating the Aussies at cricket, being British is becoming less about territory and more about having fun.

In Britain, our love for the past encompasses pretty much everything; from classic cars and vintage fashion to grand stately homes and historic castles, we like to celebrate items from times gone by and our fascination for antiques and collectables is no different. Some people mistakenly believe that if an item's old it must be an antique, however, it's possible that the item may simply be a collectable. The differences between antiques

and collectables are very clear; an antique is considered to be a valuable and collectable item whose beauty and age, rarity and unique features make it stand out amongst the crowd. To be classed as an antique, an item must be over 100-years-old, whilst the term collectable is used to refer to those items that are under 100-years-old, but are seen to be the antiques of the future. Generally speaking, clothing which was produced before the 1920s is referred to as antique clothing and clothing from the 1920s to 20 years before the present day is considered vintage. The majority of vintage clothing has been previously worn, but a small percentage has not; these are often old warehouse stock and are more valuable than those that have been worn, nevertheless they sometimes have flaws. Retro, or 'vintage style' usually refers to clothing that imitates the style of a previous era, while repro clothing is a newly-made copy of an older garment.

One thing us Brits are especially proud of is our handmade wares. There are a whole host of British

craftspeople selling and making products made here in the UK that are just as good, if not better, than their foreign counterparts. You could even commission an artist to make something bespoke and truly unique for you or a loved one. By commissioning an artist, you'll not only be getting something unique and original, but also something beautifully handmade, with an exceptional quality that's unmatched by the mass-manufactured, factory-produced tat! Not only will you get something special, you'll also be helping to support the fragile British economy, something that is desperately needed after the financial instability of recent years.

So, whether you're looking for homewares, collectables or clothes, Aspire would encourage you to buy British now and into 2016!

## The Stitch Society\*



### Aprons for Crafters

Handcrafted in Yorkshire, our aprons are made from unique fabrics such as linen, denim, moleskin and fine woollens chosen for their comfort, drape and durability.

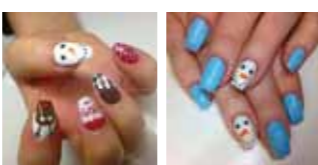
We take pride in the quality of the fabric and finish of every apron we make and every apron comes with our 10-year guarantee, so you can do what you do and look really good.

Every apron we make will adjust to fit your style and shape.

The Stitch Society\* are offering readers of Aspire magazine a 10% discount until the 31st January. Please quote AS16 at the checkout.

For more information, please visit our website [www.thestitchsociety.com](http://www.thestitchsociety.com)

## ASPIRE'S TOP RECOMMENDATION



The Nail Retreat is a newly opened salon within the Rugby area offering fully sculptured acrylic nails and unique hand painted nail art.

The owner, Emily, has worked across rugby for five years gaining knowledge and experience within the industry. Based on a growing client base, she decided to open The Nail Retreat providing a friendly, personal and professional service.

Tel: 07581 227121  
Email: [nailsbyemilynown@hotmail.co.uk](mailto:nailsbyemilynown@hotmail.co.uk)  
[www.fb.com/TheNailRetreatByEmily](http://www.fb.com/TheNailRetreatByEmily)

THE NAIL RETREAT, WHARF FARM, KILSBY LANE, RUGBY CV21 4PN



### Sophie Court Designs

Fun, quirky and original jewellery made from handmade patterned paper, Perspex and sterling silver. A distinct characteristic is that all pendants and necklaces are double sided, meaning they can go with a variety of outfits and occasions.

All finishes are in Sterling Silver so there is a real mix of precious and non-precious materials. Designs are inspired by nature but with a contemporary twist. Every piece is 100% individual, therefore making the perfect gift, which comes packaged in a mini noodle box.

Wholesale price list is available by contacting [sophiecourtdesigns@yahoo.com](mailto:sophiecourtdesigns@yahoo.com)  
Tel: 07875 172005  
[www.sophiecourtdesigns.com](http://www.sophiecourtdesigns.com)  
Facebook: [Sophie Court Designs](https://www.facebook.com/SophieCourtDesigns)



On our front cover:  
**palmers**  
GARDEN CENTRES OF EXCELLENCE

Selling everything you need for the home and garden (plants, gardening accessories, gifts, homeware, furniture, and outdoor features), Palmers Garden Centres in Enderby and Ullesthorpe is a great place for a day out, even during winter.

Mighty oaks from little acorns grow could not be more accurate for Palmers Garden Centre. A family-run business, Palmers began in 1911 on a small allotment on the edge of Leicester, where George Palmer and his wife Julia grew fruit, vegetables and flower crops to sell to the local community. Five years later, George and a friend bought a six-acre field in Narborough, at auction; they took a half each and George's three acres became first a flourishing nursery which then grew into Palmers Garden Centre. Palmers is now in the hands of an incredibly proud fourth generation of the Palmer family, Caroline Palmer and brother Robert Palmer, George's great-grandchildren. In 2011, Palmers purchased a second site in Ullesthorpe, just outside Lutterworth, to add to the ever-growing treasure trove of home and garden wares.

Palmers Garden Centre is home to a well-stocked shop, garden nursery and café serving delicious meals, snacks and cakes in a pleasant and friendly environment. Palmers Café takes food seriously, so you can rest assured of a delicious, home cooked, freshly prepared treat after wandering amongst the beautiful flower displays. Themed Afternoon Tea is served throughout the year and visitors can currently enjoy a festive theme which features festive sandwiches and mini mince pies. The Café at Ullesthorpe has undergone an extreme

makeover since being purchased in 2011; it now seats approximately 120 people in a spacious, warm and friendly environment, however it still offers the freshly prepared, homemade, locally sourced, delicious food that diners have come to expect from the Palmers name.

Kree Arnold from Palmers at Enderby, told Aspire: "Thanks to over 100 years in business, Palmers possesses an unrivalled reputation for exceptional quality. As well as our garden plants and accessories, we also have a number of concession outlets at both sites, with Enderby home to Maidenhead Aquatics and PB Fruit & Veg, while Ullesthorpe is home to Brantano and Cotton Traders. There really is something for everyone at both of our sites, including Santa's Grotto. At Enderby, children go in in groups and get 30 minutes with Santa, who reads them a story and tells them all about the magic of Christmas; at Ullesthorpe, children and their parents get five minutes alone with Santa in his Wizard of Oz themed grotto. Both grottos are open every day from now until Christmas Eve. If that wasn't enough, there are two reindeer at Enderby and a reindeer and Miniature Shetland Pony at Ullesthorpe for the whole family to enjoy. We also have fresh cut and potted Christmas trees available to buy and pre-order online."

Offering everything practical and beautiful for your garden and home, Palmers prides itself on providing a first-class service through staff attentiveness, advice and assistance; Enderby even boasts its very own garden designer. Many of the staff have a wealth of experience in everything home and garden related, ensuring

customers get the best, most knowledgeable advice, no matter the size and scale of the challenge.

Palmers at Enderby is also home to Cakes at Palmers, a business run by passionate and talented baker, Jane Jones, who brings 25 years of baking and cake decorating experience to your celebration. Made to order, Jane can help with all your cake requirements, be they large or small, birthday or anniversary celebration, christening or even the centrepiece of your wedding day. Hand crafted and beautifully decorated, Jane's cakes are made to order and you're your specific requests, so whether you need a fruit cake to feed 300 or a chocolate cake with coffee buttercream for a loved one, Jane can turn your dreams into reality. If you're in need of a cake, why not contact Jane today on **07740 743562** or via email: [cakes@palmersgardencentre.co.uk](mailto:cakes@palmersgardencentre.co.uk)

Palmers at Enderby will be open for late night shopping on Tuesday and Thursday until 22nd December, closing at 7pm. For further information, including regular opening times, please visit [www.palmersgardencentre.co.uk](http://www.palmersgardencentre.co.uk)

Tel: Enderby **0116 2863323**  
Ullesthorpe **01455 202144**

Enderby: **Leicester LE19 2BS**  
Ullesthorpe: **Lutterworth LE17 5DR**

Email: [info@palmersgardencentre.co.uk](mailto:info@palmersgardencentre.co.uk)  
Facebook: [/palmersgardencentre](https://www.facebook.com/palmersgardencentre)



Front cover image courtesy of Palmers Garden Centre

Company Director: Claire Tipton  
claire@aspiremagazinegroup.co.uk  
0116 2517385

Editor: Elaine Ellis  
north@aspiremagazinegroup.co.uk  
0116 2624867

Accounts: Kathy Tipton  
accounts@aspiremagazinegroup.co.uk  
0116 2515919

Features Writer: Laura Hyde  
editorials@aspiremagazinegroup.co.uk  
0116 2517385

Graphic Designer: Dina Mistry  
design@aspiremagazinegroup.co.uk  
0116 2517385

Senior Sales Executives:  
Sheetal Thakrar, Saj Mullan,  
Charlotte Pester, Kat Barclay  
0116 2624867

Junior Sales Executives:  
Sarah Ebockayuk, Shannon Chamberlain,  
Shaheen Alarakhia

Distribution: Self Select Distribution  
& Media Matters

Published by: Spectrum Printing Services  
0116 246 1717

To subscribe to Aspire Magazine call  
0116 2517385

Web Design: Paul Tipton at Q Creative Design  
paul@qcreativedesign.co.uk

Name & Registered Office:  
ASPIRE MAGAZINE  
NORTHAMPTONSHIRE GROUP  
4 Harcourt Way, Meridian Business Park,  
Leicester LE19 1WP

Company Number: 06036102



# Contents

- 2. Crème De La Crème
- 3. Palmers Garden Centre
- 4. Contents
- 6. Winter Art Trail
- 9. Wonders of Wiltshire
- 10. The National Wedding Show
- 11. Childcare
- 14. The Nursery World Show 2016
- 16. Care
- 17. South East's Finest
- 18. Discover Yorkshire



www.greenplan-it.co.uk



Find us on Facebook: [AspireLifestyleMag](#)



Follow us on Twitter: [@aspire\\_magazine](#)

# “The Earth without art is just Eh”

Art has always been on display; throughout history, large and expensive works of art have generally been commissioned by religious institutions and monarchs and been displayed in temples, churches and palaces. Despite these collections being privately owned, many were made available for viewing for a portion of the public. The art collection at the Palace of Versailles in France was periodically open for ‘respectable’ public viewing.

In classical times, religious institutions began to function as an early form of art gallery. From the Late Medieval period onwards, areas in royal palaces, castles and large country houses of the social elite across Europe were often made partially accessible to sections of the public in order to view collections of art. Privately established museums open to the public began

to be established from the 17th Century onwards; in fact, the first such museum was the Ashmolean Museum in Oxford, opened in 1683.

By the second half of the 18th Century, many private collections of art were nationalised and opened



Holly the Hairy Terrier by Sarah Watson, A3 pastel portrait

to the public. The British Museum, established in 1753 at the Montagu House as one of the earliest national collections open to the public. The Bavarian royal collection (now in the Alte Pinakothek, Munich) was opened to the public in 1779 and the Medici collection in Florence around 1789 (as the Uffizi Gallery). The opening of the Musée du Louvre during the French Revolution in 1793, as a public museum for much of the former French royal collection, marked an important stage in the development of public access to art; The Louvre now attracts over eight million visitors each year, making it the most visited art gallery in the world. The Louvre beats the next most visited art gallery by over two million visitors; The Metropolitan Museum of Art in New York welcomes over six million visitors through its doors each year, closely followed in third by The British



©Hamish Baird

Museum in London, which sees over 5.8 million people looking to soak up some art.

Thanks to the increased accessibility of modern technologies, there are a number of online art catalogues and galleries that have been developed

independently of the support of any individual museum. These can be divided into two categories: commercial galleries to sell the work of artists, and galleries with a focus on historical content, as a kind of encyclopaedia. Most art museums and galleries have only limited online collections.

As well as being a great place that inspires everyone, whether you're six or eighty-six, art galleries are great places to spend quality time with friends and family, in an inspirational and educational setting, so why not get out of the house and see some of Britain's brilliant art for yourself?



©Mille Cooper Art

**HAMISH BAIRD**  
LANDSCAPE ARTIST

A full-time, self-taught contemporary landscape painter, Hamish Baird spent the best part of ten years working as a 2D character animator in Bristol, working with studios such as Aardman Animations, HIT Productions, CBeebies and The Brothers McLeod. In autumn 2013, he took the decision to pursue a career as a full-time artist.

Having been brought up in the countryside, Hamish is not unfamiliar to the outdoor lifestyle and, as his work has progressed, it has become increasingly more visible to recognise his passion for the natural environment. Hamish participates regularly in exhibitions and is always keen to consider commissions.

If you would like any additional information about my work or discuss commissions or exhibitions please do not hesitate to get in touch on **07779 472 168** or email **mishart@hotmail.com**

[www.hamishbaird.com](http://www.hamishbaird.com)

ASPIRE'S TOP RECOMMENDATION



## JENNA MOORE

Jenna is a self-taught artist creating stylised impressionistic paintings of animals, landscapes and people. Her work is predominantly in oil or pen, but sometimes in acrylic. Despite the difference in medium, her work always displays similar characteristic traits with the use of patterning and fragments to represent her Aspergic view of the world.

As a young artist, she developed her own style drawing in mosaics, dividing pages into segments and adding colours. These aspects still influence her work as an adult with a preference for defining black lines, containing the colour. Her recent abstract representations are composed of shapes, frequently spirals. Jenna prefers a bright, vibrant palette, often making heavy use of texturing giving the work a 3D effect that you can actually feel.

Her work in pen and ink is composed of small fragments, which she builds up into the larger completed image. It is assembled a bit like a jigsaw.

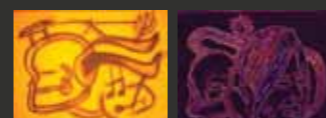
Jenna works from home in Northumberland, in a large loft space that she uses as a studio. Being Aspergic, has resulted in some unusual habits when painting. She dislikes easels so sits cross-legged on the floor with the painting resting on her legs. Leaning over her work to paint gives her an unusually close up perspective on what she is creating.

Her work has been displayed on the North East Art Tour with exhibitions in Hexham and Newcastle. She has been privately commissioned and samples of her work are currently on display in a North East hotel chain.



JMACRYLICOIL@GMAIL.COM | WWW.JENNA MOOREARTIST.COM | WWW.FACEBOOK.COM/JENNA MOOREARTIST

## KARINA SHER ARTIST



Karina Sher began to draw and have an interest in art at an early age. Her love of art was passed down from her mother, who also loves to sketch and paint.

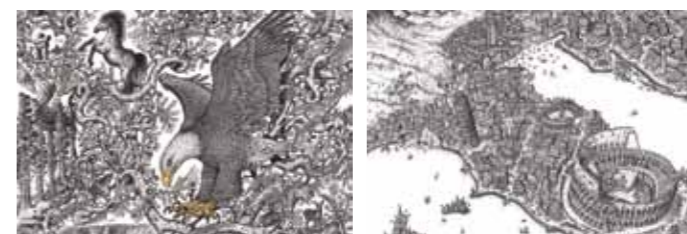
Her favourite artists and inspirations have been Dalí, due to his abstract nature, and Surrealism but also modern day spiritual artists, such as Rassouli. She also has a love of Leonardo Da Vinci and Geiger, therefore her artwork is always varied depending on her mood.

*"Art for me is a unique expression and I feel boundaries mean nothing to me, if I feel it, I draw it as opposed to fit my style in a box and limit the freedom to explore and progress."* Karina Sher.

Karina also sells prints of her work on website, which has gained a lot of interest from media and fans of abstract and surreal art. She hopes to continue designing and creating art for the rest of her life.

Tel: 07756 663698  
Email: karina.sher@hotmail.co.uk  
[www.facebook.com/KarinaSherArts](http://www.facebook.com/KarinaSherArts)

## JEFF MURRAY



Where you stare deep into something, it can sometimes stare deep back into you. Inspired by the many wonders of the world throughout life, and then expressed through the medium of pen and ink to create intricate and surreal images that you can get lost within, my works invite you into what I enjoy and experience within life. Music, film, subconscious state of mind, lifestyle and the exploration of travel, the endless search for new outcomes never tires. The self-discovery of pure creation allows you to push the envelope and inevitably go where no one else has gone.



T: 013738 58626 M: 077395 54953 E: JEFF@JEFFMURRAY.CO.UK

[WWW.JEFFMURRAY.CO.UK](http://WWW.JEFFMURRAY.CO.UK)

## Bespoke Animal Portraits by Sarah Watson



Capture the unique character of the animal you love in a portrait to cherish forever. Just provide a photo!

[www.wonkydogs.com](http://www.wonkydogs.com)  
0774 811 0951

# PAT SHORT CERAMICS



Unique ceramics sculptures. Commissions welcomed.

Email: [patshortceramics@gmail.com](mailto:patshortceramics@gmail.com)  
[www.patshortceramics.com](http://www.patshortceramics.com)

# MILLIE COOPER ART



Millie Cooper is a London-based artist who mostly works in acrylic, spray paint and resin creating gritty urban texture paintings on canvas and board. Millie is inspired by her love of nature, fashion, interiors and her travels around the world.

Her paintings present the structure of a narrative whilst inviting the viewer to create their own interpretation. Millie aims to capture the essence of any subject that is often based on a chance life encounter; references to fashion and nature combine the realistic with the fantastical.

Millie is an emerging talent and has showcased her work at various events and commissioned work for a luxury hotel; her artwork has been requested by UK and worldwide charities and she has also sold to Hollywood celebrities, including Mel Gibson and David Dayan Fisher, as well as worldwide sales.

Available for bespoke commissions, undertaken on request.

Tel: 07503 332 211 Email: [mjmilliej@gmail.com](mailto:mjmilliej@gmail.com)  
[www.milliecooper.com](http://www.milliecooper.com) @mjc\_photos

# Wonderful Wiltshire

A special, enchanted place, where visitors feel close to the earth and the ever-changing big skies, Wiltshire is a diverse county with a wealth of history, heritage, rolling countryside, breathtaking vistas, charming market towns, and excellent shopping in the cities and designer factory outlets.



©Maaïke Pope Zurcher

Characterised by its high downland and wide valleys, Wiltshire's most famous attraction has to be the World Heritage Site Stonehenge, a prehistoric monument of unique importance. Stonehenge has a new world-class visitor centre, housing museum-quality permanent and temporary exhibitions, as well as a spacious shop and café at Airman's Corner. Stonehenge's orientation on the rising and setting sun has always been one of its remarkable features. Whether this was simply because the builders came from a sun-worshipping culture, or because - as some scholars believe - the circle and its banks were part of a huge astronomical calendar, remains a mystery. Pre-booking is the only way to guarantee entry on the day and at the time of your choice; there is limited walk-up availability on the day.

Boasting 6,000 years of history and mystery in 1,346 square miles and 2,800 miles of footpaths, Wiltshire is the place to couple walking opportunities with some truly inspirational sites. A look at the famous prehistoric standing stones of Stonehenge and Avebury are worth the journey alone and if you're visiting from late April onwards, you're likely to see Wiltshire's notorious crop circles as you wander. These appear regularly throughout the summer months and whether due to artists, pranksters or aliens, make sure you take a camera to capture these unusual sites.

The medieval city of Salisbury is notable for its mediaeval cathedral, important country houses, timbered buildings, a thriving market, a buzzing arts scene, and excellent shopping thanks to High Street favourite and independent retailers.

Thanks to tranquil and picturesque countryside, combined with magnificent country houses and ancient stone buildings, Wiltshire is the ideal place to tie the knot. Add to that delicious food, award-winning photographers and first-class entertainment and the fairy-tale wedding of your dreams is possible. To find a Wiltshire wedding venue, visit [www.guidesforbrides.co.uk/find/wedding-venues/wiltshire](http://www.guidesforbrides.co.uk/find/wedding-venues/wiltshire)

An inspiring county, Wiltshire is home to an array of artists, crafters and makers. The Guild of Wiltshire Artists is a lively group of practising artists, who live in Wiltshire, regularly exhibit throughout the year and hold meetings and workshops on a monthly basis. To find out more, visit [www.guildofwiltshireartists.com](http://www.guildofwiltshireartists.com)

## All About Flowers

All About Flowers florist in Swindon is your local experienced and qualified floral designing company.

- Flexible & personal with consultations at your own environment
- Internationally acquired experience in Holland, Belgium and Russia
- RHS Chelsea Flower Show Finalist
- RHS Hampton Court Flower Show Medal Winner

Whatever you want to say, be it 'Thank You', 'Happy Anniversary' or simply 'I Love You' we will create an arrangement that will help you say it in style.

Let your wedding day be a true reflection of your personality, and everything else will follow. Once you've decided on your wedding look, it's time to turn your vision into reality!

Tel: 01793 976529  
 Email: [swindonflorist@gmail.com](mailto:swindonflorist@gmail.com)  
[www.swindonflorist.co.uk](http://www.swindonflorist.co.uk)

## Maaïke Pope Zurcher

A reflexion of my imaginary world in light, colour, contrast and form. Although I don't paint reality, there are recurring subjects in my work, like trees. They stand for 'life'.

Improvisation, imagination and an emphasis on the painting process are an essential part of my paintings. Instead of using paint to carry out a visual idea I'd like to discover the visual idea through the process of creating. Each layer of paint influences the next.

The moods and feelings that my paintings bring about are far more important to me than references to existing objects in the real world.

[www.virtualgallery.com/galleries/maaike\\_pope\\_zurcher\\_a23670303](http://www.virtualgallery.com/galleries/maaike_pope_zurcher_a23670303)  
[www.saatchiart.com/MaaïkePopeZurcher](http://www.saatchiart.com/MaaïkePopeZurcher)  
[www.fb.com/MaaïkePopeZurchermpz](https://www.facebook.com/MaaïkePopeZurchermpz)

## ARABELLA KISZELY ARTIST

As an artist I am fascinated by trying to capture the essence of my surroundings, not just visually but emotionally. Although, I mainly paint in oils I have been experimenting lately with water-based paint, developed from strong compressed charcoal and water drawings. Colour has always been my main means of communication but lately the structure and composition of a painting has become ever more important.

As well as my everlasting passion for the Hebrides and Cornwall, I am becoming increasingly drawn to trees in all the changing seasons, particularly those outside my window. My latest paintings were painted flat on the ground in the rain and then carefully tipped briefly so that interesting rivulets appeared on the canvas

## LITTLE BUCKLAND GALLERY

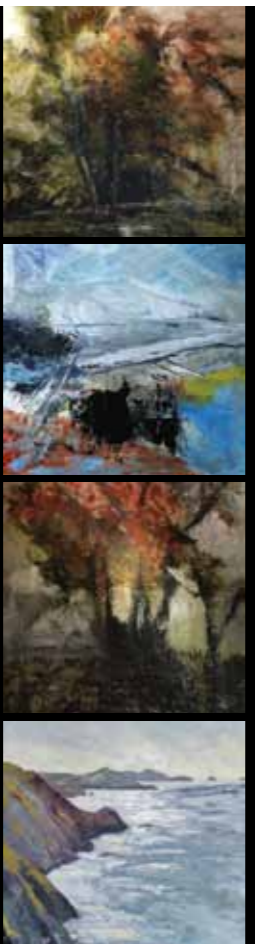
As the reputation of the gallery has developed, I have become increasingly selective in the artists I exhibit. I now only show work that interests me.

Many of the people who come to my exhibitions are artists and a huge part of the enjoyment in running the gallery comes from conversations with them about the pieces on show and their own work. In this I think I am unusual, as to me, the most important part of curating an exhibition is the level of response it creates in me personally.

In March 2016, I will be curating an exhibition as part of 'Impress' - the International Printmaking Festival. Followed by the Broadway Arts Festival Open Art Competition 3-19 June 2016, details for entry at [www.broadwayartsfestival.com](http://www.broadwayartsfestival.com)

Do please visit my website for further details [www.littlebucklandgallery.co.uk](http://www.littlebucklandgallery.co.uk)

[www.twitter.com/littlebuckland](https://twitter.com/littlebuckland)  
[www.facebook.com/artinabarn](https://www.facebook.com/artinabarn)



# THOMAS BURNHAM



Tel: 07763 982177  
 Email: [thonapa115@hotmail.co.uk](mailto:thonapa115@hotmail.co.uk)

## Duchy Rag House

Set in a peaceful, rural location surrounded by open countryside with the highest standard of accommodation, breakfast and warmest of welcomes; hard to believe you are just ten minutes from the M4 and the A419.

From the moment you walk through the front door into the hall, with its open fire, you will feel at home. We aim to create a haven for the leisure and business traveller alike in our stylish bedrooms, private dining room and drawing room.

Duchy Rag House offers guests the things we consider important like good showers, comfortable beds and areas to relax, perfect for that winter break.

Tel: 01666 861136  
 Email: [stay@duchyraghouse.co.uk](mailto:stay@duchyraghouse.co.uk)  
[www.duchyraghouse.co.uk](http://www.duchyraghouse.co.uk)

## STABLE COTTAGE

Situated in Milton Lilbourne, one of the loveliest villages in Wiltshire, Stable Cottage is a converted farm building into a detached dwelling on one level. It has a large, open-plan sitting room with a dining table at one end.

There are two bedrooms; one has twin beds with en-suite shower room, the other is a double bedroom with en-suite bathroom. The kitchen is all electric with a fridge/freezer, washing machine, dishwasher and microwave oven, as well as a new cooker with separate hob. There is also a small coat room with a tumble dryer, which is ideal for dog baskets etc. with a clothes airing rail. There is a TV and a DVD player.

Contact: Peter Crofton-Atkins  
 Telephone: 01672 562 819  
 Evening (until 8pm): 01672 564711  
 Mobile: 0774 823 4392  
[www.stable-cottage-ml.co.uk](http://www.stable-cottage-ml.co.uk)  
 STABLE COTTAGE, AVONCOURT, MILTON LILBOURNE PEWSEY, WILTSHIRE SN9 5LQ

## THE NATIONAL WEDDING SHOW

20th – 21st February 2016, Manchester Central  
 26th – 28th February 2016, London Olympia  
 4th – 6th March 2016, Birmingham NEC

This spring sees the return of the UK's biggest wedding show, where you can experience every element of your dream day unfolding before your very eyes.



From discovering your perfect venue and trying on the dress of your dreams, to sampling delectable delights, eyeing up fabulous floral creations and seeking out your idyllic honeymoon hideaway, The National Wedding Show is the ultimate one-stop-shop to discover the wedding experts in every field. Endless inspiration and countless shopping opportunities to try, buy, book and hire everything you can imagine for your big day, all under one roof.

Kickstart the day by taking a seat at the renowned Catwalk Show to see the latest trends for all the bridal party brought to life on the runway. A showcase of the hottest collections of the season from the nation's finest designers, boutiques and retailers, provides invaluable inspiration for not only the bride, but also mothers and

fathers, beautiful bridesmaids, dashing best men and ushers and not forgetting the man of the moment, the groom. Get up close and personal with the all-important wedding dresses by hitting the designated Bridal Boutique and Designer Boutique to browse and try on an unrivalled selection of dresses under one roof.

Floral fantasies become a reality at the Designer Flower Market, where you will find inspiration-a-plenty from the show-stopping displays together with expert advice from a line-up of top florists. Finally, round off your day by registering for your gift list and perhaps even booking the honeymoon of your dreams. High Street favourites will be on hand to help, including John Lewis, Debenhams, Sandals, Thomas Cook, Sandals and Turquoise Holidays.

You can book tickets now by visiting [www.nationalweddingshow.co.uk](http://www.nationalweddingshow.co.uk) or calling the ticket hotline on **0844 874 0486**.

ASPIRE'S TOP RECOMMENDATION

*Ahumble*  
Photographer

This is your special day, and I want to capture as many precious moments as I can.

I offer a very flexible service from just the wedding ceremony and traditional photos, to full reportage style coverage of the whole day, including both formal and candid shots.

All of the photos I take are for you to keep on DVD to share with friends and family. Once you have chosen your favourite images, a professionally produced coffee table book is designed and individually bound just for you.

For further information contact Angela on 07801 450460  
 Email: [angela@ahumblephotographer.co.uk](mailto:angela@ahumblephotographer.co.uk)  
[www.ahumblephotographer.co.uk](http://www.ahumblephotographer.co.uk) | [www.facebook.com/ahumblephotographer.co.uk](http://www.facebook.com/ahumblephotographer.co.uk)

## Prepare for your bouncing bundle



There are few more important moments in life than bringing a new person into the world. Having a baby is a momentous occasion and one that will change your life, and the way you look at the world forever more.

During your pregnancy, it's vital to take care of yourself, so eat a healthy diet, aiming for five portions of fruit and veg, as well as a range of dairy products, dark green leafy veg, beans, pulses and wholegrain cereals for their zinc, b vitamins, folic acid and calcium. However, don't eat for two – it's a common mistake to consume more than you need to because you're pregnant, but you actually only need an extra 300 calories maximum during your third trimester (after week 24).

Vital products for your child include nappies, a cot, a mosses basket, feeding bottles, bibs, clothes and finally, blankets to not only keep your newborn warm, but to comfort them as they adjust to life outside the womb.

Whether it's for your baby shower, christening or baby's first birthday, no celebration is complete without a mouth-watering cake. From simple, plainly decorated circular cakes to children's favourites of trains and animals there's a cake out there to suit all tastes. Whatever style of cake you choose, make sure you choose something your guests will be talking about for years to come; and the only way to do that is by enlisting the services of a professional cake maker.

It is always difficult to trust other people to look after your child once you're ready to return to work, but there are many companies out there with excellent reputations. A revealing study, which tracked the development of 3,000 children over the course of seven years, discovered those with the longest exposure to nursery education performed better in tests at the age of seven. Children of all social classes were found to be four to five months ahead of their peers in terms of education and scooped better results in national reading, writing and maths tests. Leading professors from Oxford, London and Nottingham universities also noted that children with three years nursery education benefitted further, by being 10 to 12 months ahead of children who were brought up entirely at home. This evidence is a great boost to working parents, who can often feel guilty for sending their child to nursery, and they can now feel confident that their little one has a bright future ahead of them.

## Nottingham Cakes



Cake makers in Nottingham creating deliciously designed cupcakes, wedding cakes, christening cakes and birthday cakes for every occasion.

Based in Beeston, Nottingham



T: 07946 435859  
 E: [sharon@nottinghamcakes.co.uk](mailto:sharon@nottinghamcakes.co.uk)  
[www.nottinghamcakes.co.uk](http://www.nottinghamcakes.co.uk)

[www.fb.com/NottinghamCakes](http://www.fb.com/NottinghamCakes)

## The Magnolia Tree



At The Magnolia Tree, we have a passion for vintage chic. Our hire collection brings together beautiful pressed glass vases and candle holders with wooden table plans, crates and wedding card boxes. We've added in metal buckets and jugs and some quirky signs to make a lovely mix-and-match selection.

Whether you're looking for a complete venue décor or a few pretty little extras to complement what you already have, we'd love to help decorate your special day.



To arrange a consultation, call Carolyn on 07985 646462 or email [themagnoliatree@outlook.com](mailto:themagnoliatree@outlook.com)  
[www.facebook.com/The-Magnolia-Tree-587207558091889](http://www.facebook.com/The-Magnolia-Tree-587207558091889)

GRAY'S

My name is Beckie and I am a mobile therapist and make-up artist covering Bourne, Stamford, Spalding, Peterborough, and surrounding areas.

I have over ten years' experience in the industry, and as well as loyal clientele that I see on regular basis, I also work as a make-up artist for wedding fairs, professional photo shoots and prom nights.

I do offer pamper parties, packages for birthdays, Christmas, weddings and proms or any other special occasion. I also offer gift vouchers.

I think it's lovely for people to be pampered in their own homes.

Tel: 07745156360  
 Email: [beckiegray@outlook.com](mailto:beckiegray@outlook.com)  
[www.graysmobilebeauty.co.uk](http://www.graysmobilebeauty.co.uk)

Natalya James  
Bespoke Bridal

Exquisite bespoke wedding dresses and bridal wear, custom made in our studio in Northamptonshire. All brides that choose Natalya James will receive one-on-one consultations and a bespoke service, making the journey to create your dream wedding dress personal to you.

Natalya James also specialises in bridesmaid dresses, mother of the bride, accessories and alterations.



The Loft, Hattondale,  
 The Promenade, Wellingborough,  
 Northamptonshire NN8 5AL  
[info@natalyajames.com](mailto:info@natalyajames.com)



## Award-winning on-the-go fun for your little ones thanks to The PlayBag Company

Designed to keep little ones entertained when you are out and about, The PlayBag quickly and easily converts into a play mat ensuring those essential errands can be completed with as little fuss from your children. Impressed with the ingenuity and ease with which The PlayBag is transported, unfolds, and folds away after play, Aspire have awarded creator and mum of two, Debbie Jilbert, with an Aspire Crystal Trophy for Design and Innovation 2016.

Debbie told Aspire: "I made the first bag two or three years ago for my son, Peter, who would play fantastically on his own but only when provided with something to engage his active imagination. I dreamt up the idea while at the hairdressers and it went down a storm. I used to be a teacher and as Peter was approaching school age I had to make a decision about going back to work, or doing something that would fit in with family life. After receiving endless positive feedback on The PlayBag, I decided to take the plunge and start my own business; I now make each and every PlayBag that is ordered by hand using high quality, plush fabrics; as I hand make each one, I can incorporate any design theme or features you or your little one would like.

At the moment I have four standard designs, but am happy to discuss custom orders, but these do take a little longer. The PlayBag Standard comes with two 3D features, such as tunnels, bridges or caves, while The PlayBag Mini comes with just one. I am happy to make PlayBags for babies, which don't contain any 3D features or small parts but are colourful and extremely tactile. My aim is not to include too much on The PlayBag because I want to stimulate the child's imagination, so they create a world of their own on the PlayBag."

On hearing the news of our Crystal Trophy for Design and Innovation 2016, Debbie said: "I'm delighted to receive this Trophy from Aspire. It's fantastic to have my hard work rewarded, as well as have my belief in The PlayBag confirmed. Thank you, Aspire for this award and the support you've given me; what a fantastic way to end 2015."

Aspire Managing Director, Claire Tipton, added: "My two-and-a-half-year-old son Frank loves to play and The PlayBag is a great way to keep him entertained and away from things he shouldn't be playing with when I'm out and about. My daughter, Nell, who is almost six, also loves to play on The PlayBag; it's great to know I can unfold the bag and they'll be entertained while I get errands done. I can't recommend it enough."

If you're looking for the perfect gift for your child, or a busy mum this Christmas, look no further than The PlayBag, which comes in two standard sizes:

- PlayBag Standard (which starts at £40)
- PlayBag Mini (which starts from £28)



Debbie and her son, Peter

**PlayBag Mini is smaller and more compact than the Standard, making it easier for children to manage themselves; it also includes short handles, four sets of sturdy popper closures, and Velcro top flap to keep contents enclosed. Both the PlayBag Standard and PlayBag Mini are machine washable, and have been CE tested which means that it has undergone rigorous tests to ensure its safety as a toy; all you need to do it add toys, children and some imagination.**



To buy your little one a PlayBag, or for further information, please visit [www.theplaybagcompany.co.uk](http://www.theplaybagcompany.co.uk) or call Debbie on 07958 807189.

Get 10% off by using 'ASPIRE' in the online checkout, before 28th February 2016.



# Save the Date: 5th & 6th February

## The Nursery World Show 2016

Designed to be for everyone in the early years community, the Nursery World Show takes place at the Business Design Centre in London on Friday 5th and Saturday 6th February 2016.

The Nursery World Show made a hugely-anticipated and successful return to the early years calendar in 2015 and plans are already underway for the 2016 event to be even bigger and better. The Nursery World Show has a strong reputation for attracting a range of attendees from all levels within the early years sector, as well as a wide array of exhibitors keen to showcase their products and services to an eager, engaged audience. Through an informative, educational and inspiring early years seminar and masterclass programme led by renowned experts in the sector, supported by the free live theatre and themed zones, the Nursery World Show is designed to be for the early years community.

Organised by the team at Nursery World, the leading brand dedicated

to early years and childcare, the show is designed to allow all attendees to:

- Share best practice
- Attend seminars and masterclasses presented by world-renowned early years experts
- Drop in to the free live theatre to benefit from an engaging mix of presentations on core early years subjects
- Talk to the sector's suppliers about the products and services which they are showcasing
- Meet up with colleagues old and new, establish connections and grow networks
- Find inspiration and ideas that will enhance practice

The editorial team at Nursery World, led by editor Liz Roberts and deputy editor Ruth Thomson compile a wide-ranging, engaging and stimulating programme of seminars and masterclasses for the Nursery World Show. Nursery World's reputation allows us to attract key names both nationally and internationally

to speak at the show on a rich mix of topics covering areas including best practice, policy and early years theory.

With this rich mix of professional seminars, expert-led masterclasses, practice-based live theatre presentations as well as resource zones and the leading companies exhibiting their products and services, the Nursery World Show 2016 is the must-attend event for everyone in the early years.

The Business Design Centre in London has been the home of the Nursery World Show for many years and is ideally suited to provide a welcoming, adaptable and professional environment for all visitors and exhibitors.

For further information or to book tickets, please visit [www.nurseryworldshow.com](http://www.nurseryworldshow.com)

Facebook: [/NurseryWorldUK](https://www.facebook.com/NurseryWorldUK)  
Twitter: [@nurseryworldshow](https://twitter.com/nurseryworldshow)

## Excellent early years with Edith Cadbury Nursery School

Founded in 1939 by George Cadbury in memory of his wife Edith, Edith Cadbury Nursery School offers 15-hour-a-week places to children aged two, three and four. Originally a charity, the nursery became a Birmingham maintained nursery in 2014, funded by the Local Education Authority.

Based in Weoley Castle, southwest Birmingham, Edith Cadbury Nursery School benefits from a dedicated and experienced team of staff, some of whom have worked at the school for over ten years; they pride themselves on building positive relationships and a fantastic foundation for life-long learning.

School Head, Sarah Vernon, told Aspire: "We have a long tradition with care and education in Birmingham."

Edith Cadbury was a pioneer of the Nursery School movement, and we pride ourselves on providing a stimulating, safe and secure environment where all children are valued, respected and listened to. We offer each of our children a broad, balanced and relevant curriculum with opportunities for both 'structured' and 'free' play. We have excellent facilities, age-appropriate activities, and a great outdoor space where children can mix with and interact with one another. Last December, Ofsted rated us as a 'Good' nursery school.

"Our school day starts at 8:50am and ends at 2:50pm but we offer an out of school club for children aged three to seven which we started in September. Our standard places are for two and a half days, but parents can purchase extra hours and or days to increase their child's time here."



Please contact us on 0121 475 3098 if you wish to arrange a visit.  
Edith Cadbury Nursery School, Somerford Road, Birmingham B29 5LB  
enquiry@edithcadbury.bham.sch.uk | www.edithcadbury.bham.sch.uk

**The Croft Preparatory School**

The Croft Preparatory School is an independent co-educational day school for children from 2 to 11 years old, situated in a beautiful 30-acre site on the outskirts of Stratford-upon-Avon. The School has over 400 pupils, with class sizes of no more than 20 pupils. The Croft is a vibrant, forward-thinking school, based on traditional values. It offers a diverse range of opportunities within a broad and balanced curriculum

Contact Us Tel: 01789 293795 Email: [office@croftschool.co.uk](mailto:office@croftschool.co.uk)  
[www.croftschool.co.uk](http://www.croftschool.co.uk)

THE CROFT PREPARATORY SCHOOL, ALVESTON HILL, LOXLEY ROAD, STRATFORD-UPON-AVON, WARWICKSHIRE CV37 7RL

**LEICESTER PREPARATORY SCHOOL**  
Stonegate College

Age: 3-11 years  
April 2015 'OUTSTANDING' early years provision.

- Small class size, ensuring excellent education
  - Nurturing and warm atmosphere
- Regular language lessons - French, Chinese, Mandarin and Latin
  - Class and individual classical music lessons
    - Regular educational trips
- Freshly home-cooked meals provided and prepared on site daily
  - After school care and activities
- Door-to-door morning and after school bus service

Leicester Preparatory School, 2 Albert Road, Stonegate, Leicester LE2 2AA  
Telephone and email address: 0116 2707414 | [admissions@leicesterprep.co.uk](mailto:admissions@leicesterprep.co.uk)  
[www.leicesterprepschool.co.uk](http://www.leicesterprepschool.co.uk)

**KNIGHTON DAY NURSERY**

Knighton Day Nursery provides an exceptionally high standard of care, with extremely friendly and caring staff who make the day so much fun for all the children. Our aim is to provide care and learning in an environment which meets each child's individual needs in a safe, secure, happy and caring atmosphere. We are always happy to show prospective parents to the nursery and answer any questions that you may have.

Our sessions are 8am – 6pm.  
We are able to offer 7:30am mornings and flexible sessions also.

Telephone 0116 2883030 Or 0116 2813009  
E: [info@knightondaynursery.co.uk](mailto:info@knightondaynursery.co.uk)  
[WWW.KNIGHTONDAYNURSERY.CO.UK](http://WWW.KNIGHTONDAYNURSERY.CO.UK)

**St Bernards Day Nursery Limited**

Where we learn, grow and achieve together

Our primary objective is the care, welfare and education of the children within our setting. We aim to achieve this by employing highly qualified staff and promoting a stimulating and caring environment; this ensures all children are given the same opportunities to reach their full potential.

Children are accepted at St Bernards Nursery irrespective of race, religion, sex or disability.

For further information please visit our website or telephone on the number below.

Tel: 01455 635456 | Email: [stbernardnursery@btconnet.com](mailto:stbernardnursery@btconnet.com)  
[www.stbernardsdaynursery.co.uk](http://www.stbernardsdaynursery.co.uk)  
St Bernards Day Nursery Ltd, 6 Clarendon Rd, Hinckley, Leicestershire LE10 0PL



# A Little Tender Lovin' Care

According to the Office for National Statistics, a third of babies born in the UK this year can expect to live to celebrate their 100th birthdays, and the number of centenarians is estimated to rise from 14,500 in 2012 to 110,000 in 2035. In fact, progress in modern medicine has led some researchers to suggest that the first person to live until the grand old age of 150 has already been born.

If your loved one requires a little extra help in their twilight years, the first thing you must do is to get an assessment from social services for the person you're looking after. This will make clear whether or not they need residential care, and what other options might be available. Social services may be able to assist with finding a suitable home.

All care homes vary in their quality so it can be hard to know what qualities to look for when choosing a home. A good care home will:

- Involve residents, carers and their families in decision making.
- Support residents in doing things for themselves and maximising their independence.
- Be staffed by well-trained people, the majority of which will have worked there for a long time.
- Respect residents' modesty and make sure that

they look respectable, while recognising residents' choice about what they wear.

- Be accredited under the Gold Standards Framework for end of life care.

The independent regulator of all health and social care services in England, The Care Quality Commission monitors, inspects and regulates hospitals, care homes, GPs, dentists and homecare services. For further info, visit [www.cqc.org.uk](http://www.cqc.org.uk)

Around two per cent of the UK population have learning difficulties, but there is still much misunderstanding amongst the general population surrounding children and adults with learning difficulties and challenging behaviour. The term learning disability refers to a group of disorders that affect a broad range of academic and functional skills, including the ability to speak, listen, read, write, spell, reason and organise information. Specialist schools not only provide the very best care, but also enable your child to reach their full potential in comfortable and safe surroundings. These schools are perfectly equipped to provide the best education, as each child's needs are treated on an individual basis.



Caring for a child with severe learning disabilities or one that is described as having 'challenging behaviour' can be stressful. They need so much more care than children without specific needs, especially when it comes to their education. Mainstream schools are often not equipped to cater for, or cope with, children with autism, Asperger's Syndrome, or challenging behaviour. Challenging behaviour is any form of behaviour that interferes with children's learning or normal development. This is why it is always better for your child to enrol in a specialist school that is much better equipped to deal with the specific care needs of your child.

## Stunning & Spectacular

South East England is blessed with a multitude of attractions, open countryside, picturesque towns and villages, and a spectacular coast, all waiting to be explored...

An Area of Outstanding Natural Beauty (AONB), the **Surrey Hills** offers some of South East England's most beautiful and accessible countryside. Designated in 1958, this AONB has an extensive footpath network, open commons, breathtaking views, attractive market towns and villages and much more.

Thanks to its relative abundance of fruit-growing and hop gardens, Kent is known as 'The Garden of England', making it a fantastic year-round holiday destination. Located eight miles northeast of Dover, **Deal** is a former fishing town. Thanks to has an excellent range of independent shops, three weekly markets, two castles, wonderful architecture and a fantastic pier, Deal has something for everyone, young or old.

A major pilgrimage site in the Middle Ages, **Canterbury** is a cathedral city steeped in history and tradition, whilst offering something for the cosmopolitan



©Clay Cottage

city visitor. Canterbury is home to the stunning Cathedral, as well as the ancient ruins of St Augustine's Abbey and Canterbury Castle; however, luxury hotels, fine restaurants and independent retailers offer a completely modern experience.

In Sussex, you're never far from the sea and the dramatic white cliffs that drop to secluded rocky bays, shingle beaches and swathes of golden sand, which is why Sussex is perfect for a family break. Situated to the east of the ancient town of Rye in East Sussex, the village of **Camber** benefits from a sandy beach with picturesque dunes and an array of interesting wildlife. In West Sussex, beach-lovers will find, and adore, **Bracklesham Bay**, which looks out onto the English Channel; on a clear day, you can see the Isle of Wight and the Nab Tower lighthouse and the Spinnaker Tower in Portsmouth from the beach.



### Pebble Beach Cottage

Just a stone's throw from the sea, Pebble Beach Cottage is perfectly placed for you to enjoy all the many charms of Deal. Its peaceful location guarantees a good night's sleep, yet the lively High Street with its quirky independent shops, markets and cafés is a mere stroll away along the unspoilt promenade. An even shorter walk brings you to the Strand, where you'll find the green and bandstand, a family-run bakery, pubs, convenience stores and one of Deal's best breakfast spots looking out over the Channel.

Deal itself is a picture-perfect Georgian seaside town, rich in maritime history, with two proper castles, local museums and a striking modernist pier all worth a visit. Further afield within a thirty-minute drive are Dover Castle, the cathedral city of Canterbury and the major shopping outlet at Ashford. If you prefer two legs or two wheels, there are plenty of country and coastal paths and trails just waiting to be explored.

Tel: 07500 950568  
[www.ownersdirect.co.uk](http://www.ownersdirect.co.uk)  
 Pebble Beach Property no: 1873295  
 Lifeboat Property no: 8150451  
 Seashell Property no: 8171240



24A

24A in Deal, Kent, is a fabulous luxury apartment arranged over two floors of a large Victorian house.

It is spacious and comfortable, sleeping five, with high ceilings and polished oak flooring throughout and plenty of seating. There is a well-equipped high specification kitchen, flatscreen TV, DVD player, iPod dock, and high speed Internet. We provide a selection of board games, books and DVDs, or choose to head out and explore Deal and the surrounding area with its castles, cliffs, beaches, history, golf, cycling etc.

The apartment is just a two-minute walk from the beach and new promenade and a stone's throw from Deal's vibrant award-winning High Street, with its fabulous delis, restaurants, coffee shops and weekly market. The perfect setting for your relaxing holiday as a couple, family or with friends. The apartment has its own off-street parking.

T: 07887 710598  
 E: [isobel.wiseman@hotmail.co.uk](mailto:isobel.wiseman@hotmail.co.uk)  
[www.ownersdirect.co.uk](http://www.ownersdirect.co.uk)  
 Property no: 8153578

## Orchard Manor View

Orchard Manor View is a stunning new, state-of-the-art care home with a difference, providing care for adults aged 18+ with physical disability and/or associated mild to moderate learning disability. The home is located within a quiet residential area, with easy access to the city centre. Beautifully refurbished to create a spacious, peaceful and luxurious living space throughout the home, Orchard Manor View has an abundance of unique decor and style.

- We have 21 rooms, all with wet-room style en-suites
- Three spacious themed lounges
- Large multi-functional recreation room with cinema style projector
- Four hydro therapy baths, with mood lighting and bluetooth music
- Respite care available
- We can also accommodate day care, long and short term stays
- Multi-sensory room, again with lights and bluetooth music
- Beautifully appointed service users' kitchen
- Fresh, nutritious meals prepared by our chef
- Beautiful gardens with fruit trees, a green house, raised beds for gardening and a sensory courtyard with water feature
- Games station and Wi-Fi with laptops and tablets
- Wide range of activities provided by registered co-ordinators

Our aim is to bring warmth, independence, care and support to our service users, so that we can improve their quality of life and provide peace of mind.

Please contact Shannon Newham - registered manager - on **0116 3194460**  
 Email: [manager@orchardmanorview.co.uk](mailto:manager@orchardmanorview.co.uk)  
[www.orchardmanorview.co.uk](http://www.orchardmanorview.co.uk)

ORCHARD MANOR VIEW, 34 ROBERT HALL STREET, LEICESTER LE4 5RB



Tessa Halliwell BSc MA

## UNLOCKING LEARNING

DYSLEXIA | AUTISM | DYSCALCULIA | ADD

### Dyslexic?

As a psychologist, Tessa Halliwell has spent her working life exploring the cognitive development required for learning. She has specialised in helping those that think differently and who have a variety of learning locks.

Here, one of Tessa's dyslexic clients explains how she helped: 'I always knew I had dyslexia but it wasn't until I failed a test at work and was dismissed that I decided to do something about it. Tessa showed me how to focus and identify the words and letters that caused me confusion and mistakes. Then the fun part was using my natural picture thinking ability to create meaning and understanding where I had none before' 42-year-old woman.

Tessa knows that when dyslexic people start to learn this way progress is often very rapid. In addition, as they begin to recognise their mental talents they also develop a renewed sense of self-esteem and confidence. 'Thank you for showing him how to achieve by himself; for making our son believe in himself. He is happy to go to school now.' Mother of a nine-year-old.

The programmes Tessa uses can unlock the learning difficulties of dyslexia, dyscalculia, ADD or autism. Arrange a free consultation now.

[www.unlocking-learning.co.uk](http://www.unlocking-learning.co.uk) | [www.davisautism.com](http://www.davisautism.com)  
**0116 259 8068**

**A COGNITIVE APPROACH SUITABLE FOR ANY AGE**

## SANDUNES

This newly-built, spacious house has three bedrooms sleeping up to six guests, plus two on sofa bed. The house is an ideal base for a relaxing beach holiday for the whole family - or just a nice weekend away from London at any time of year.

It is only a few hundred yards from the beach with lots of things to do in the area. And of course there are all the mod cons, including flatscreen TV and wireless broadband. Camber golf course is just a little way down the road.



T: 07887 715857 E: [bk@xk7.com](mailto:bk@xk7.com)  
[www.ownersdirect.co.uk](http://www.ownersdirect.co.uk)  
 Property no: 8051359



## CLAY COTTAGE

Clay Cottage is constructed from straw bales and clay and is a gorgeous eco-friendly cottage combining great style with comfort. It boasts a welcoming, beautifully furnished interior, all topped off with home baked cakes on arrival. Nestling in a lovely farm setting, with a variety of farmyard animals to meet - even alpacas!

Clay Cottage is one of four cottages (sleeping between four and six) set on Elmfield Farm and provides a true taste of country living, yet it is only a fifteen minute drive from the historic city of Canterbury for masses of sight seeing and great shopping. Guests are welcome to join the owners feeding the animals each evening, perfect for young families and for experiencing the 'good life'.



Tel: 01227 709404  
 Email: [harriet@elmfieldfarmcottages.co.uk](mailto:harriet@elmfieldfarmcottages.co.uk)  
[www.elmfieldfarmcottages.co.uk](http://www.elmfieldfarmcottages.co.uk)



## TOR HATCH

Tor Hatch is a substantial family home, with tennis court and pool standing in five acres of secluded grounds within walking distance of the picturesque village of Shere. The property enjoys stunning views over the beautiful Surrey Hills, a delight for walkers and cyclists.

There are five double bedrooms, open fires and cosy kitchen with Aga. In the pond garden, there is an en-suite Swedish cabin with wood burner. Tor Hatch is a perfect property for a family holiday, special celebration, corporate event or a country weekend with friends.

T: 07767 230338  
 E: [emma@emmoahea.co.uk](mailto:emma@emmoahea.co.uk)  
[www.ownersdirect.co.uk](http://www.ownersdirect.co.uk)  
 Property no: 8168434

### PERFECT FOR MID-WEEK SPRING BREAKS



## Kuta

Luxury Seaside Holiday Cottage

Set only moments from Bracklesham Bay seaford, Kuta is an ideal spot to enjoy a British seaside holiday. Stylishly designed, immaculately presented, and full of creature comforts, Kuta is the perfect base for a coastal retreat.

The cottage is just steps from the beach and has a large, enclosed secure garden with a covered private hot tub. There is SKY HD sports and movies for relaxed evenings and arcade table with the classics, as well as two Wii consoles, DVD, Netflix and more for entertainment. Wi-Fi and hard wired internet is available. The cottage has underfloor heating throughout. Sleeps 12, plus two infants. Disabled access.



Tel: 07788 660707 / 07515 697759  
 Email: [jennifer@litttlebluefishgroup.com](mailto:jennifer@litttlebluefishgroup.com)  
[www.kutabeachhouse.com](http://www.kutabeachhouse.com)

# Discover coast & countryside charm in Yorkshire

Whether you are looking for a seaside holiday destination, somewhere to escape and breath in fresh air, or a cosmopolitan weekend break with friends, Yorkshire has it all...



©VisitBritain

Yorkshire's coastline is home to glorious beaches, rocky coves, towering cliffs, tiny fishing ports, non-stop family fun or windswept, waveswept solitude. Boasting the North York Moors National Park as its backdrop, the rugged Yorkshire coastline is full of resorts and fishing villages, high cliffs and rocky shores and wildlife. In fact, you can follow the cliff top path for over 30 miles along the North Yorkshire Heritage Coast. Whitby is one of the UK's favourite places to visit along Yorkshire's Heritage Coast, and the ominous Abbey is simply not to be missed. The view of the mist hovering over Whitby's Abbey is rumoured to have inspired Bram Stoker to write 'Dracula' and there is a museum to discover more about this celebrated writer.

A small fishing village within the North York Moors National Park, five miles south of Whitby, Robin Hood's Bay is home to family-friendly, sandy beaches, numerous coastal and countryside walks and cycleways, fantastic shops and restaurants, and a variety of themed events; for such a small place, there's so much to see and do. The pretty pan-tiled village points back to a bygone era, or an adventure from an Enid Blyton story book. Few are untouched by its magic, and whether this is derived from a history of smugglers, ghosts and fisherfolk, or the unique character of its maze of tiny 'streets' lined by cottages centuries old, 'The Bay' is a favourite of both adults and children. The lower

village is virtually car free and its award-winning beach has rockpools, fossils, interesting bird life and a seal colony. There are great pubs and restaurants and lots of history and character.

The Yorkshire Dales boasts outstanding scenery, an abundance of wildlife and wild habitats, and a rich cultural heritage - it's a great place, ideal for outdoor recreation and peaceful relaxation. Much of the landscape here is limestone country - lush green valleys crested with white limestone cliffs and limestone pavements, which cut through wild uplands beneath towering peaks of dark millstone grit. This breathtaking scenery makes The Dales the perfect place for walking, cycling, horse riding, birdwatching, fishing and just generally enjoying the great British outdoors.

Set in the heart of the Yorkshire Dales, Wensleydale has plenty to captivate the visitor, from castles and waterfalls, to picturesque villages and tempting restaurants. However, it is without a doubt, Yorkshire Wensleydale Cheese that's made this corner of Yorkshire famous, which you can see being made at the Wensleydale Creamery in Hawes. At the heart of Wensleydale lies the gateway town of Leyburn, which boasts spectacular views of the surrounding countryside, traditional pubs serving hearty grub, and a weekly market full of treasures. Leyburn is an ideal base for walking, sightseeing, or just watching the world go by.

Located in the heart of the Yorkshire Dales Nidderdale Area of Outstanding Natural Beauty begs to be explored. To the west you'll find a remote and wild gritstone landscape with vast swathes of heather moorland, home to an array of wildlife, including grouse. To the east, visitors will find a much softer, pastoral landscape with rolling farmland, traditional meadows rich in wildlife, sheltered river valleys, beautiful reservoirs, and picturesque stone-built villages, such as Grewelthorpe and Timble.

Steeped in history and heritage, York should be your number one choice for a city getaway. The Medieval county capital is home to 30 impressive museums and galleries, the most popular being the Jorvik Viking Centre. Recreating life in York 1,000 years ago, the Centre stands on what was once the houses and workshops of the Viking-age city of Jorvik, and has been lovingly recreated to give visitors a glimpse at what life was like in the past. As a living museum, you can expect to see working craftsmen in costume and smell the vile stench of the cesspit, and with 40,000 artefacts to see, you'll need a whole day to discover it all. Alternatively, visit York Minster, with its majestic architecture or get a bird's eye view of the city by climbing Clifford's Tower.

To plan your Yorkshire holiday, please visit [www.visityorkshire.co.uk](http://www.visityorkshire.co.uk)

## Fun on the farm at Eastfield Farm Cottage

Situated in tranquil open countryside, Eastfield Farm Cottage offers a comfortable stay throughout the year for holidaymakers looking to explore everything north Yorkshire has to offer. A converted and restored barn on a small working farm, Eastfield Farm Cottage has been finished to a high standard by owner Sue Holman, who has owned the farm on which the property sits for 16 years.

Sue told Aspire: "The buildings at the back of our house were falling further and further into disrepair, so we had to make a decision to knock them down or do something about them. After five years of fighting, we finally got planning permission to convert them and the first was opened two years ago. We're just this week starting work on the second, as our long-term plan is to have four holiday lets on the farm. We're just 15 minutes' drive from York and its many attractions, including the Jorvik Centre, the Minster and The Shambles, while locally there's the Elvington Air museum, Allertorpe waterpark and Gliding club at Pocklington along with various golf clubs, pubs, restaurants and shops. As we're on the foot of the Yorkshire Wolds, there's a wealth of walking, riding and cycling from the door. I live onsite and am on hand should guests need anything, but I like to leave them to enjoy their stay peacefully and privately. I do provide a welcome pack, containing milk, bread, butter, eggs, a small supply of tea, coffee and sugar, toilet rolls, and dishwasher tablets, on arrival."

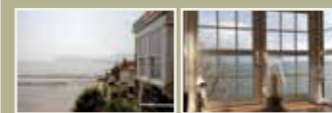
Eastfield Farm Cottage boasts two bedrooms, a double and a twin, as well as a double sofa bed in the lounge downstairs. The open-plan living area benefits from two comfortable sofas, flatscreen TV with DVD player, DAB radio with CD player and iPod dock, as well as high pitched ceiling and oak beams. The well-equipped kitchen has a dining table with six leather chairs, fridge/freezer, electric oven/hob, microwave, dishwasher, and washing machine. There is a shower room with walk in shower enclosure, and a separate W.C. with wash basin. Outside, there is seating for six people, as well as a gas barbecue. Parking is off-road and directly outside. Towels, bed linen and Wi-Fi are provided.

Sue added: "The nearest village with pub and shop selling everyday essentials is one mile away, while the town of Pocklington is around five miles away; it has an array of shops, a bank, a supermarket, tea rooms, restaurants, and a leisure centre. Within walking distance, guests will find Pocklington Canal, which you can walk along to Pocklington or to Melbourne. Local canal boat rides can be organised."

Short breaks are available throughout the year from £100 per night (based on the minimum two-night stay). Further information, availability and prices can be found online at [www.ownersdirect.co.uk](http://www.ownersdirect.co.uk) (property no: 8152129) or [www.eastfield-farm-cottages.co.uk](http://www.eastfield-farm-cottages.co.uk) Alternatively, please call Sue on 01759 318215 or email [sue.holman@supanet.com](mailto:sue.holman@supanet.com)

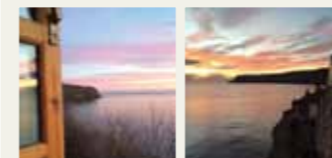


## The Studio Holiday Cottage



The Studio sleeps up to six guests and is an exceptional holiday cottage with unbeatable sea views. It is situated on the edge of a beautiful expanse of beach, in the lower village. It is ideal for anyone and available for short, out of season breaks. If you're looking for amazing views, peace and comfort, The Studio is perfect for you.

The area of Robin Hood's Bay itself is an old fishing/smugglers village on the East Coast of Yorkshire. Surrounded by the North Yorkshire Moors National Park, this stunning holiday destination lies at the end of the Coast to Coast walk from St. Bees, and is on the cycle track from Whitby to Scarborough. The friendly locals and the charm of the village makes The Studio Holiday Cottage in Robin Hood's Bay the perfect holiday destination for everyone to unwind.



For more information, or to book, call Sally on 01357 440555 or 07970 858233  
Email: [sallycrozer@yahoo.com](mailto:sallycrozer@yahoo.com)  
[www.robin-hoods-bay-holiday-cottage.co.uk](http://www.robin-hoods-bay-holiday-cottage.co.uk)



## HOGARTH COTTAGE

Hogarth Cottage has an open-plan living/dining/kitchen area, and is heated by electric radiators and a living flame electric fire for extra warmth. The kitchen is fully equipped with everything you would need. Upstairs there are two bedrooms: one double and one twin, with ample storage space, and a bathroom with bath and electric shower.

Linen is included in the cost with the exception of towels; beds will be made up for your arrival. Parking available. Short breaks are available in off-peak periods or in high season at short notice if there is a vacancy. Sorry - no smoking and no pets at the property.



M: 01740 630872  
E: [mumglynne@aol.com](mailto:mumglynne@aol.com)



## Cecilia House Apartment

The recently refurbished flat in a 250 year-old house is ideal for two people seeking a peaceful, cosy retreat in the heart of a lovely village.

There are many and varied activities close by, a wide variety of eating places, walks, the Wensleydale and Settle-Carlisle Railways and castles, ancient churches and Cathedrals within reach. Something for all tastes, yet a beautiful refuge from everyday stress.



Tel: 01969663368  
Email: [joan\\_m\\_foster@hotmail.com](mailto:joan_m_foster@hotmail.com)  
[www.ownersdirect.co.uk](http://www.ownersdirect.co.uk)  
Property no: 8132063



## Unique-Retreats

Five-Star luxury set amid the most stunning North Yorkshire countryside, Unique-retreats is the perfect getaway, comprising of romantic retreats sleeping two and cottages sleeping up to six, in the pretty village of Sleights, a few miles from Whitby and long sandy beaches, or visit the historic city of York.

Unique-retreats properties all have log burning stoves, comfy furniture and the most amazing views. It is sheer romance to sit with a glass of wine and watch the steam trains puffing along in the Valley from Whitby to Pickering and the deer playing in the field below, or stroll to the local pub where a warm welcome awaits you.

T: 07962 223582  
E: [holidays@unique-retreats.co.uk](mailto:holidays@unique-retreats.co.uk)  
[www.unique-retreats.co.uk](http://www.unique-retreats.co.uk)



# Discover olde worlde charm delicious dishes at **The Royal Oak**

Situated in Old Malton in rural North Yorkshire, The Royal Oak is a traditional village pub with an abundance of olde world charm and character. Owned by Ian Turner for the last 25 years, The Royal Oak is a unique and quirky village pub, built around the mid-17th Century. The pub has retained much of its olde world charm and character over the years, which adds to the friendly and welcoming atmosphere felt by all who cross the threshold.

Ian told Aspire: "We always have five real-ales on tap, as well as three draught continental lagers and all the usual spirits and shorts. I rarely have to leave Yorkshire for real-ales because we have so many breweries here and as I own the pub independently, I'm not tied to any brewery, meaning I can bring my customers only the best. There is a different guest ale on every month."

Malton is known as 'Yorkshire's Food Capital' and at the family-run Royal Oak, there's something for everybody with classic pub grub, a varied vegetarian menu, children's menu, and a special's board for

dishes that are out of the ordinary. Ian added: "We make everything from scratch, including all our sauces, such as our apple sauce, our horseradish sauce and our coleslaw. The only thing we bring in is our bread, which is freshly baked by a local bakery. We've recently launched a new menu with a whole host of new and exciting dishes, including: creamy garlic mushrooms with warm crusty bread, Hunter's chicken with beer battered onion rings, chunky chips and salad, spicy vegetable bean burritos with smoked cheese sauce, chunky chips and salad, and school days treacle sponge and custard. Not only is everything homemade and delicious, it's also really good on your wallet. Starters and nibbles are around the £3 mark and our steaks are excellent value at just £11.50."

The Royal Oak is a pub for all season, with open fires in its two rooms for the winter and a sun-trap of a beer garden to the rear for the summer months. Comfortable seating at the front on the village green is ideal for people-watching too.

The Royal Oak  
Old Malton



Served throughout December, The Royal Oak's festive menu is the perfect way to get into the Christmas spirit. Starters are available for £3.95, mains from £8.75 and puddings, including homemade luxury Christmas pudding with rum sauce or brandy custard, for £4.95. If you book all three courses, it costs just £21.50, with a complimentary glass of mulled wine upon arrival.

This New Year's Eve, why not head to The Royal Oak for a fun-packed evening that includes a free buffet, free glass of bubbly at midnight, and a free fireworks display to welcome in 2016. Entry is free but must be before 10pm. If you'd like to make a weekend of it, why not stay at The Royal Oak's recently renovated bed and breakfast, which boasts two double bedrooms, a shared bathroom, a fully equipped kitchen and a charming lounge for guests to enjoy. The B&B rooms can be hired on a self-catering (£45 per night for room-only) or bed and breakfast basis (£55 per night).

Ian said: "The cottage came on the market just before Christmas 2013 and I decided that it would make an excellent bed and breakfast. I've owned The Royal Oak for over 25 years but more recently I've noticed the need for somewhere for people visiting the area to stay. It's an unspoilt, peaceful area that's located just one-minute from the A64, the Scarborough to York trunk road, meaning it's well positioned for exploring the best north Yorkshire has to offer."

It might be far from your mind right now but Burn's Night on 25th January sees another celebration (no kilts needed!) taking place at The Royal Oak. Ian and his team provided a supper of Haggis, Neeps and Tatties with Scottish beers, the Flying Scotsman and Edinburgh Castle just £2.50 per pint, and tots of malt whisky £2.50 and blended whisky £2.

The Royal Oak can host cosy, intimate affairs, and larger, more flamboyant ones for your special occasions. During the winter, Ian and his team can easily accommodate 45, whilst during the summer, weather permitting, this increases to 80. The Royal Oak often plays host to themed evenings and fundraising events.

**OPENING TIMES:**

Mondays 5pm - 10pm.  
Tuesday to Sunday from 12noon until 12midnight

**FOOD TIMES:**

Tuesday to Saturday, 12noon until 8pm  
(Tuesday 9pm: wine and cheese evening).  
Sundays 12noon until 3pm

For more information on The Royal Oak, please visit [www.royaloakoldmalton.co.uk](http://www.royaloakoldmalton.co.uk) To book your stay at The Royal Oak B&B, please call Ian on **01653 699334**

**THE ROYAL OAK, 47 TOWN STREET,  
OLD MALTON, MALTON, YORKSHIRE YO17 7HB**



# King's High Warwick awarded Aspire Crystal Trophy

As our school days are supposed to be the best years of our life, finding the right environment for your child, where they'll be nurtured and encouraged to develop the different aspects of their personality, as well as leaving with a well-rounded education, is essential.

Founded in 1879, King's High Warwick is an independent day school for girls aged 11 to 18. From its beginning, King's High has been a forward looking, friendly school, proud of its reputation for academic excellence, as well as personal development of its girls. With such a prestigious reputation, it's no surprise that Aspire have awarded King's High with an Aspire Crystal Trophy for Educational Services 2015.

Situated in a beautiful historic setting in the heart of Warwick, King's High benefits from state of the art, modern facilities behind their famous blue doors, including science laboratories, IT suites, interactive learning classrooms, and a fully equipped gymnasium and fitness suite.

Head Master, Richard Nicholson, the first Head Master King's High has had in its long history, told Aspire: "We are honoured to be presented with Aspire's Crystal Trophy for Educational Services 2015. It is wonderful that the educational excellence for which King's High stands has been recognised in this way. Our aim is to provide the right environment for our girls to grow, develop and excel. Our skill

is harnessing the individual talents of every girl who passes through our doors, whether academic, social, artistic or sporting. We believe that our girls obtain the best of both worlds, being educated in a single-sex environment while reaping coeducational benefits from our many and close links with our nearby brother school, Warwick School. Our success is attributed to the excellence of specialist teaching staff and a focus on the all-round development of the individual child.

"Every girl is celebrated for who she is here at King's; she can explore and develop her interests, and gain confidence in herself and her abilities. She can also be assured that the whole school community is focused on realising her ambitions and dreams, whatever they may be. This makes for a truly exciting educational journey. When a girl joins King's, we enter into a very special partnership with her family; we know that it is by working together that we can make the most of each girl's potential."

Class sizes vary by Key Stage, generally being smaller further up the school to reflect the subject choices and more individual needs of girls as they approach public examinations. In addition, those subjects of a practical nature are often taught in smaller groups to allow individual access to equipment and resources.

King's High is ranked 81 in The Telegraph's top 100 Independent Schools in the UK. In 2015, 100% of

girls attained A-C grades at GCSE, and 99.6% of girls achieved the highest A Level grades, exceeding the national average for grammar schools. One of three schools within the Warwick Independent Schools Foundation, together with Warwick Preparatory School and Warwick School, King's High produces bright, friendly and spirited girls.

If you would like to find out more, you can visit [www.kingshighwarwick.co.uk](http://www.kingshighwarwick.co.uk) or you can attend King's High's next Open Evening on Friday 1st July. If your daughter is currently in Year 5 and you would like to know more about her joining King's High in Year 7, please register to attend the Taster Day on 12th March, by calling 01926 494485 or register online. Girls interested in joining the Sixth Form can arrange an individual Taster Day by emailing the Registrar: [registrar@kingshighwarwick.co.uk](mailto:registrar@kingshighwarwick.co.uk)

King's High School for Girls, Smith Street,  
Warwick CV34 4HJ

